

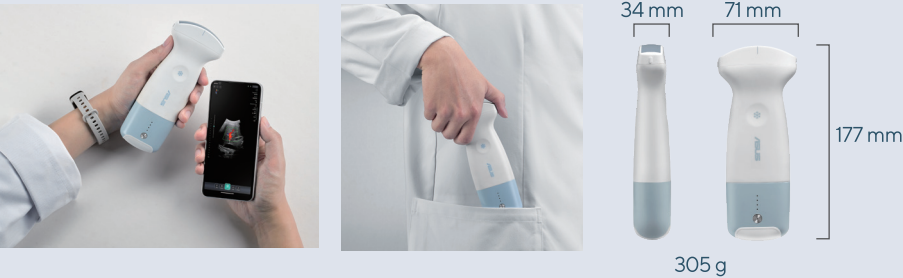
# ASUS Handheld Ultrasound LU800



## A point-of-care ultrasound system just in your hand

ASUS Handheld Ultrasound Solution LU800 is a software-based system that enables qualified medical professionals to conduct ultrasound scans and receive high-quality images in real-time, enabling rapid diagnosis of variety of conditions.

It simply connects to a compatible smartphone or tablet, and is immediately ready for use. This handheld device is lightweight, compact, and durable and can be deployed in ambulances, operating theaters, or training purposes. ASUS Handheld Ultrasound solution support your clinical decision confidently all the time.



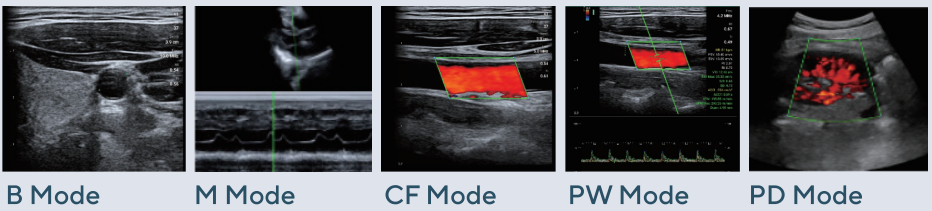
## ► 128-channel High-Fidelity

ASUS Handheld Ultrasound Solution LU800 features a 128-channel beamformer for clear and sharp ultrasound images.

## ► Lightweight & Wireless Design

Pocket-sized dimensions give medical professionals the flexibility to use ASUS Handheld Ultrasound LU800 anywhere, enabling efficient scanning and diagnosis anywhere.

## ► Superior images and various scanning modes



Bring medical care to even the most remote areas.

Portability and user-friendly interface enable high-quality medical imaging to medical facilities and remote locations.

### In ambulances



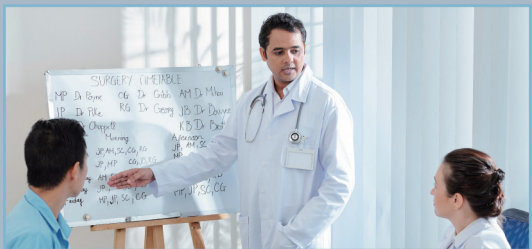
### Emergency room



### Clinicians on regular rounds



### Medical training





## ASUS MediConnect

The ASUS MediConnect app gives users access to all imaging parameters and functions. It supports DICOM connectivity to easily connect with PACS, allowing users to easily manage scanned images.

### Tunning Functions

- Depth
- Frequency
- Gain
- Persistence
- Enhancement
- TGC
- Dynamic Range
- Gray Map
- Freeze Timer
- Color PRF
- Color Sensitive
- Color Angle

### Measurement Tools






- Bladder Measurement
- OB Early
- OB Mid Late
- Superficial Mirror
- Cardiac
- MSK



Making medical care more intelligent. ASUS Smart Health comprises of a team experienced innovators who use advanced algorithms and medical image processing to create integrated solution for smart medical equipment. ASUS offers a variety of mobile medical equipment that serve as the basis of the Internet of Medical Things (IOMT) to enhance the onsite diagnostic efficiency of medical professionals.

## Specs

Specs

					
Probes	LU800L	LU800C	LU800M	LU800PA	LU800E
Types of array	Linear	Convex	Microconvex	Phased Array	Endocavity
Frequency	4.2-12.5MHz	2-5MHz	3.6-8.5MHz	1.3-3.7MHz	3.6-8.5MHz
Max Depth	12.6 cm	30 cm	12.6 cm	30 cm	15 cm
Elements	128	128	128	64	128
Field of View	NA	60 °	100 °	90 °	151 °
Radius	NA	60 mm	15 mm	NA	10 mm
Dimensions	168 × 58 × 34	177 × 71 × 34	176 × 58 × 34	174 × 58 × 34	345 × 58 × 34
Weight	270 g	305 g	265 g	280 g	295 g
Image Modes	B / M / CF* / PW* / PD*				
Image File	JPEG / PNG / BMP / DICOM*				
Compatibility	ASUS MediConnect App				
Battery	3000 mAh				
Intended Use & Application					
Abdomen		●	●	●	
Abdomen Difficult		●	●		
Renal / Spleen		●			
Pelvis / Urology					●
Bladder Measurement		●			
GYN		●			
OB Early		●			●
OB Mid Late		●			
Prostate					●
Peripheral Vessels	●				
Thyroid	●				
Breast	●				
Superficial	●				
Musculoskeletal	●				
Carotid	●				
Ocular	●				
Aesthetic					
Nerves	●				
Cardiac				●	
Pediatric Cardiac			●		
Neo Head			●		
FAST		●			

\*Optional \*\*Availability depends on different regions.



Ultrasound scans, anytime anywhere

# ASUS Handheld Ultrasound LU800



128-channel for high quality images

Lightweight wireless design

Superior imaging with various image modes

DICOM support & Cloud Viewer

IP44 water resistance